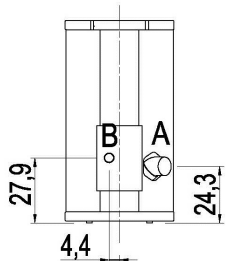
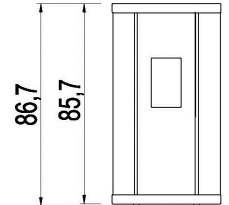
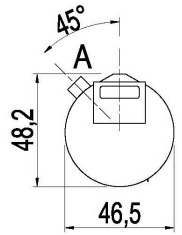




Nominal power	kW	6,5
Reduced power	kW	2,4
Introduced thermal power (max)	kW	7,4
Nominal water useful power	kW	-
Reduced water useful power	kW	-
Nominal efficiency	%	91
Reduced efficiency	%	94,5
Heating volume (min-max)	m ³	58 - 156
Nominal CO at 13% O ₂	%	0,009
Reduced CO at 13% O ₂	%	0,008
Emissions CO (13% O ₂) (min-max)	mg/Nm ³	105 - 113
Emissions OGC (13% O ₂) (min-max)	mg/Nm ³	5,0 - 1,0
Emissions NOX (13% O ₂) (min-max)	mg/Nm ³	127 - 114
Dust content at 13% O ₂ (min-max)	mg/Nm ³	39 - 13
Boiler capacity (H ₂ O)	l	-
Hopper capacity	kg	12
Combustible		Pellet ø6
Hourly consumption (min-max)	kg/h	0,5 - 1,5
Autonomy (min-max)	h	8 - 24
Ignition electrical absorption (max)	W	320
Operating electrical absorption (max)	W	48,8
Supply and frequency	V - Hz	230 - 50
Chimney flue depression	Pa	12
Exhaust diameter	mm	80
Combustion air inlet diameter	mm	60
Mass of smoke (min-max)	g/sec	2,0 - 3,5
Exhaust fumes temperature (max)	°C	179
Net weight	kg	68
Gross weight	kg	77
Exhaust fumes	see	A
Hole combustion air inlet	see	B
Ducting outlet	see	-
Ducting capability up to	m	-



Art. 15A B-VG 2015
BImSchV 2016
Regensburg
München
Stuttgart
Aachen



MATCH

7019014		Anthracite steel	EAN 8053859010739
7019015		White steel	EAN 8053859010746
7019016		Red steel	EAN 8053859010753
7019017		Dark bronze steel	EAN 8053859010760

OPTIONAL :

5019003		Upper exhaust Kit	EAN 8053859010968
---------	--	-------------------	-------------------

PLUS



Cast iron burning pot



Sealed chamber



Remote control



Connection to the room thermostat



Comfort mode



Back exhaust



Upper exhaust (optional)

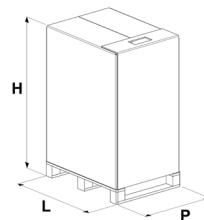


Integrated Wi-Fi



Daily weekly programming

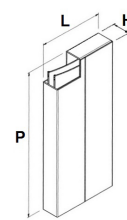
STOVE PACKING



L (cm)	H (cm)	P (cm)
80	114,3	60

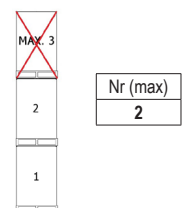
VOLUME (m ³)	0,55
--------------------------	------

LINING PACKING



	L (cm)	H (cm)	P (cm)
steel	55	13	107

STOCKING



TRANSPORT

