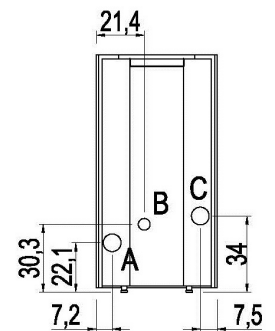
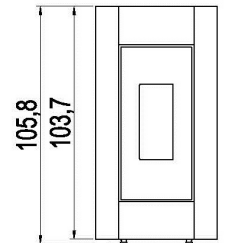
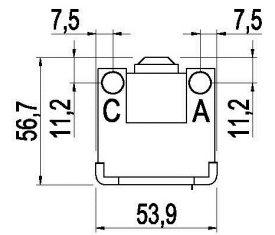


PRINCE³ PLUS 11 KW

PELLET AIR PLUS - Pellet stoves



Nominal power	kW	11
Reduced power	kW	3,3
Introduced thermal power (max)	kW	12,3
Nominal water useful power	kW	-
Reduced water useful power	kW	-
Nominal efficiency	%	89
Reduced efficiency	%	93,5
Heating volume (min-max)	m ³	79 - 264
Nominal CO at 13% O ₂	%	0,002
Reduced CO at 13% O ₂	%	0,022
Emissions CO (13% O ₂) (min-max)	mg/Nm ³	268 - 23
Emissions OGC (13% O ₂) (min-max)	mg/Nm ³	7,0 - 2,0
Emissions NOX (13% O ₂) (min-max)	mg/Nm ³	105 - 121
Dust content at 13% O ₂ (min-max)	mg/Nm ³	11 - 14
Boiler capacity (H ₂ O)	l	-
Hopper capacity	kg	22
Combustible		Pellet ø6
Hourly consumption (min-max)	kg/h	0,73 - 2,6
Autonomy (min-max)	h	30 - 8,5
Ignition electrical absorption (max)	W	360
Operating electrical absorption (max)	W	77
Supply and frequency	V - Hz	230 - 50
Chimney flue depression	Pa	12
Exhaust diameter	mm	80
Combustion air inlet diameter	mm	60
Mass of smoke (min-max)	g/sec	3,7 - 7,6
Exhaust fumes temperature (max)	°C	197
Net weight	kg	108,7
Gross weight	kg	121,5
Exhaust fumes	see	A
Hole combustion air inlet	see	B
Ducting outlet	see	C
Ducting capability up to	m	6



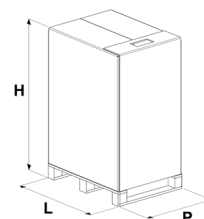
MATCH

7018002	NEUTRAL STRUCTURE	EAN 8053859010036
6918014	Anthracite steel	EAN 8053859010197
6918017	White steel	EAN 8053859010227
6918013	Light bronze steel	EAN 8053859010180
6918016	Red steel	EAN 8053859010210
6919012	Titanium steel	EAN 8053859011262

PLUS

- Cast iron burning pot
- Sealed chamber
- Ducting with 1 independent motor
- Aluminium Auger
- Connection to the room thermostat
- Comfort mode
- Upper, back exhaust
- Concentric flue kit (optional)
- Cast iron door
- Daily weekly programming
- Remote control
- Wi-Fi kit (optional)

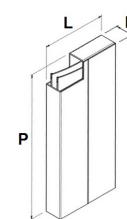
STOVE PACKING



L (cm)	H (cm)	P (cm)
80	124,5	70

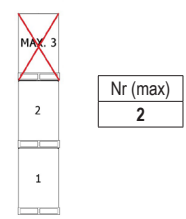
VOLUME (m ³)
0,70

LINING PACKING



L (cm)	H (cm)	P (cm)	
steel	57	11,5	104,7

STOCKING



TRANSPORT

