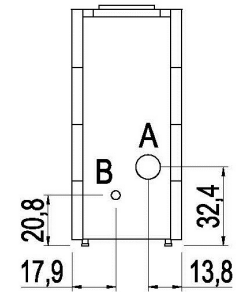
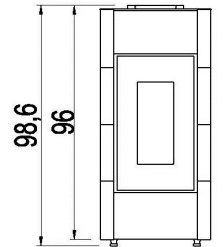
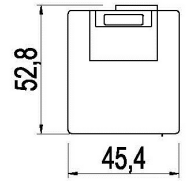


# CRISTAL<sup>3</sup> 8,5

## PELLET AIR - Pellet stoves



Nominal power	kW	8,6
Reduced power	kW	2,4
Introduced thermal power (max)	kW	9,73
Nominal water useful power	kW	-
Reduced water useful power	kW	-
Nominal efficiency	%	89,1
Reduced efficiency	%	92,9
Heating volume (min-max)	m <sup>3</sup>	58 - 206
Nominal CO at 13% O <sub>2</sub>	%	0,006
Reduced CO at 13% O <sub>2</sub>	%	0,022
Emissions CO (13% O <sub>2</sub> ) (min-max)	mg/Nm <sup>3</sup>	274 - 79
Emissions OGC (13% O <sub>2</sub> ) (min-max)	mg/Nm <sup>3</sup>	3,9 - 1,5
Emissions NOX (13% O <sub>2</sub> ) (min-max)	mg/Nm <sup>3</sup>	104 - 136
Dust content at 13% O <sub>2</sub> (min-max)	mg/Nm <sup>3</sup>	19,3 - 14
Boiler capacity (H <sub>2</sub> O)	l	-
Hopper capacity	kg	18
Combustible		Pellet ø6
Hourly consumption (min-max)	kg/h	0,53 - 2,01
Autonomy (min-max)	h	9 - 34
Ignition electrical absorption (max)	W	346
Operating electrical absorption (max)	W	76
Supply and frequency	V - Hz	230 - 50
Chimney flue depression	Pa	11,6
Exhaust diameter	mm	80
Combustion air inlet diameter	mm	60
Mass of smoke (min-max)	g/sec	2,2 - 4,8
Exhaust fumes temperature (max)	°C	196,6
Net weight	kg	79
Gross weight	kg	88
Exhaust fumes	see	A
Hole combustion air inlet	see	B
Ducting outlet	see	-
Ducting capability up to	m	-



Art. 15A B-VG 2015  
BImSchV 2016  
Regensburg  
München  
Stuttgart  
Aachen



### MATCH

7018021		Anthracite steel	EAN 8053859010029
7018020		White steel	EAN 8053859010012
7018019		Red steel	EAN 8053859010005

### PLUS



Cast iron burning pot



Sealed chamber



Aluminium Auger



Connection to the room thermostat



Comfort mode



Back exhaust



Wi-Fi kit (optional)



Cast iron door

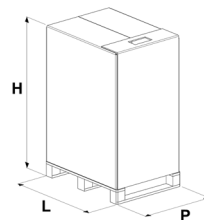


Daily weekly programming



Remote control

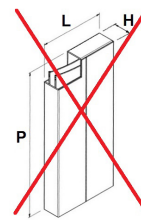
### STOVE PACKING



L (cm)	H (cm)	P (cm)
80	114,3	60

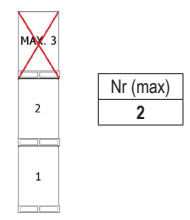
VOLUME (m <sup>3</sup> )	0,55
--------------------------	------

### LINING PACKING

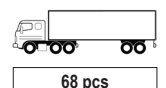


L (cm)	H (cm)	P (cm)
-	-	-

### STOCKING



### TRANSPORT



68 pcs